

COPPER TUBE

Production Range of Straighten Tube $\Phi 6.00 \sim 28.57 \times 0.30 \sim 1.50$ (mm)

Outside Diameter	Wall Thickness													
	0.30	0.35	0.40	0.45 (26SWG)	0.50 (25SWG)	0.55 (24SWG)	0.60 (23SWG)	0.65	0.70 (22SWG)	0.75	0.80 (21SWG)	1.00	1.20	1.50
6.00														
6.35 (1/4 in)														
7.00														
7.94 (5/16 in)														
8.00														
9.52 (3/8 in)														
10.00														
12.00														
12.70 (1/2 in)														
14.00														
15.00														
15.88 (5/8 in)														
16.00														
19.05 (3/4 in)														
22.22 (7/8 in)														
25.40 (1 in)														
28.57 (1 1/8 in)														

Note: Any specification exceed the above, please contact us for information.
Length 4~7m

Production Range of Pancake Coil $\Phi 4.00 \sim 19.05 \times 0.30 \sim 1.50$ (mm)

Outside Diameter	Wall Thickness													
	0.30	0.35	0.40	0.45 (26SWG)	0.50 (25SWG)	0.55 (24SWG)	0.60 (23SWG)	0.65	0.70 (22SWG)	0.75	0.80 (21SWG)	1.00	1.20	1.50
4.00														
4.76 (3/16 in)														
6.00														
6.35 (1/4 in)														
7.94 (5/16 in)														
8.00														
9.52 (3/8 in)														
12.00														
12.70 (1/2 in)														
14.00														
15.00														
15.88 (5/8 in)														
16.00														
19.05 (3/4 in)														

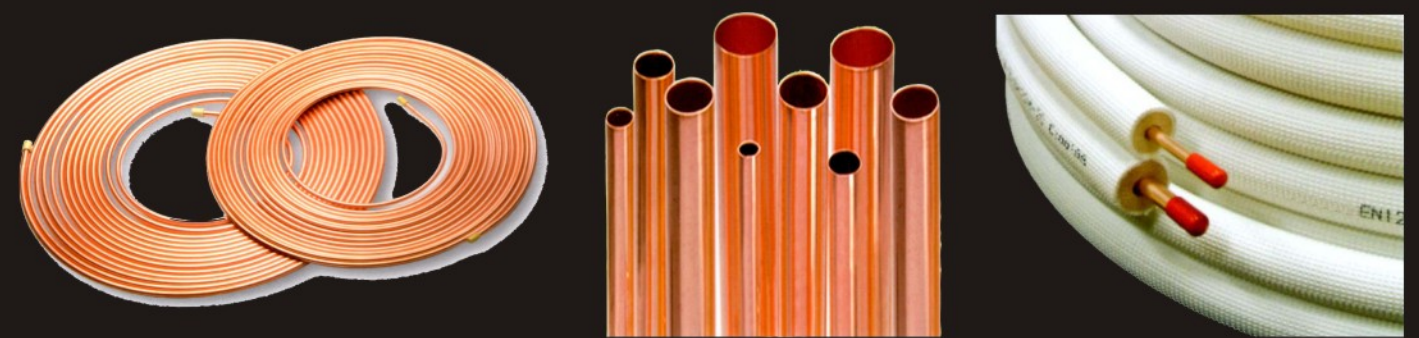
Note: Any specification exceed the above, please contact us for information.
Length ≈ 13 m

Technical Specification

	ASTM B280	ASTM B743	JIS H 3300	GB/T 17791
Copper Alloy No.	C12200	C12200	C12200	TP2
Chemical Composition, %	Cu+Ag \geq 99.90 0.015 \leq P \leq 0.040	Cu+Ag \geq 99.90 0.015 \leq P \leq 0.040	Cu+Ag \geq 99.90 0.015 \leq P \leq 0.040	Cu+Ag \geq 99.90 0.015 \leq P \leq 0.040
Temper Designation	O60, H58	O60, O50, H58	O, OL, 1/2H, H	M, M2, Y2, Y
Grain Size	O60 \approx 0.035mm	O60 \approx 0.040mm O50 \approx 0.040mm	O \approx 0.025~0.060 OL \approx 0.040mm	M: 0.015~0.060 M2 \approx 0.040mm
Tensile Strength	O60 \geq 30KSI(205MPa) H58 \geq 36KSI(250MPa)	O60 \geq 30KSI(205MPa) O50 \geq 30KSI(205MPa) H58 \geq 36KSI(250MPa)	O \geq 30KSI(205MPa) OL \geq 30KSI(205MPa) 1/2H: 245~325MPa H \geq 315MPa	M \geq 30KSI(205MPa) M2 \geq 30KSI(205MPa) Y2 \geq 250MPa Y \geq 315MPa
Elongation	O60 \geq 40% (2 in)	O60 \geq 40% (2 in) O50 \geq 40% (2 in)	O \geq 40% (50 mm) OL \geq 40% (50 mm)	M \geq 40% (A) M2 \geq 40% (A) Y2 \geq 15% (A)
Yield Strength	/	O60 \geq 9KSI(62MPa) O50 \geq 9KSI(62MPa) H58 \geq 30KSI(205MPa)	/	M: 35~80 (MPa) M2: 40~90 (MPa) Y2: \geq 120 (MPa) Y: \geq 250 (Mpa)
Rockwell Hardness	/	O60 \leq 60 (15T) O50 \leq 65 (15T) H58 \leq 30 (30T)	O \leq 60 (15T) OL \leq 65 (15T) 1/2H: 30~60 (30T) H \leq 55 (30T)	/
Expansion Test	40%	40%	40%	40%
Cleaness Requirements	\leq 0.0035g/ ft^2 (0.038g/ m^2)	\leq 0.0035g/ ft^2 (0.038g/ m^2)	/	\leq 0.0035g/ ft^2 (0.038g/ m^2)
Nondestructive	All: standard rounded shall be 22% of the nominal wall thickness	All: standard rounded shall be 22% of the nominal wall thickness	All: size of drill hole $\Phi 4 \sim 10$: 0.9mm $\Phi 10 \sim 20$: 1.0mm $\Phi 20 \sim 30$: 1.1mm	All: size of drill hole $\Phi 4 \sim 6$: 0.4mm $\Phi 6 \sim 10$: 0.5mm $\Phi 10 \sim 20$: 0.6mm $\Phi 20 \sim 30$: 0.8mm



[Your satisfaction is always our cherished desire!]



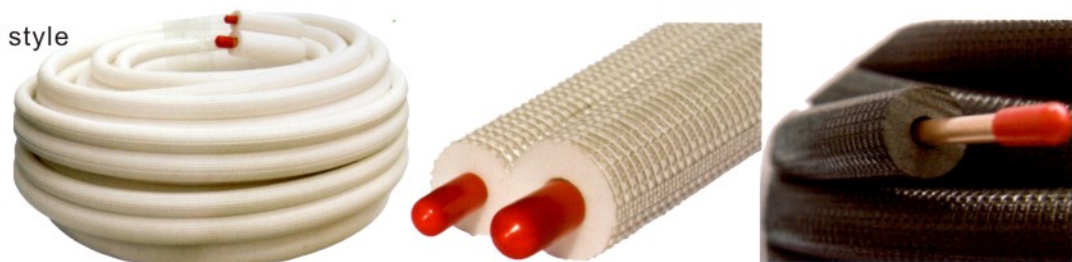
The models and specifications of equipment listed in this catalog shall be subject to change without any prior notification due to product updating.

AIRTROJAN INC.
www.airtrojan.com

EXTRA

Matform EXTRA is two layers construction, composed of Polyethylene seamless form and Polyethylene cover.

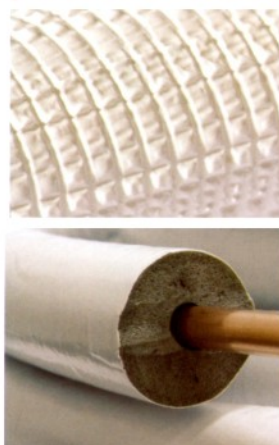
- Traditional European style
- Competitive cost



MATFORM EXTRA

Fire Resistance	EN 13501, M1 or UL optional
Ecology	RoHS & REACH
Chemical Resistance	Acid, Alkali & Oil
UV	Anti UV Protection
Expected Lifetime	5 years
Appearance	White, Ivory, Grey, Black
Material	High Quality Polyethylene, CFC Free
Size	1/4"~7/8"
Isolation Thickness	8mm, 9mm, 10mm
Copper Tube Thickness	0.8mm & 1.0mm
Foam Density	30~33 kg/m ³
Temperature Range	-60°C~120°C
Thermal Conductivity	0.032 W/(m*K)
Water Absorption	<0.001 g/cm ³
Permanent Deformation Ratio	2.6%
Thermal Contraction	5.8%

Optional Cover Pattern



SUPER

Matform SUPER is three layers construction, composed of Polyethylene seamless form tube, cross-linked Polyethylene sheet and Polyethylene cover.

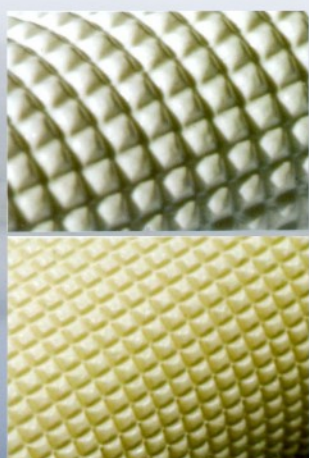
- More application fields
- Good combination of high temperature resistant and fire resistant



MATFORM SUPER

Fire Resistance	EN 13501, M1 or UL optional
Ecology	RoHS & REACH
Chemical Resistance	Acid, Alkali & Oil
UV	Anti UV Protection
Expected Lifetime	5~8 years
Appearance	White, Ivory, Grey, Black, Pink or Brown
Material	High Quality Polyethylene, CFC Free
Size	1/4"~7/8"
Isolation Thickness	8mm, 9mm, 10mm
Copper Tube Thickness	0.8mm & 1.0mm
Foam Density	30~33 kg/m ³
Temperature Range	-80°C~120°C
Thermal Conductivity	0.032 W/(m*K)
Water Absorption	<0.001 g/cm ³
Permanent Deformation Ratio	2.6%
Thermal Contraction	5.8%

Optional Cover Pattern



VRV

Matform VRV is specially designed for VRV system, its super thick insulation provide excellent thermo protection.

- Pre-expanded copper tube save installation time
- Fire resistant and high temperature resistant



MATFORM VRV

Fire Resistance	EN 13501, M1 or UL optional
Ecology	RoHS & REACH
Chemical Resistance	Acid, Alkali & Oil
Expected Lifetime	8 years
Material	High Quality Polyethylene, CFC Free
Size	1/4"~1-3/4"
Isolation Thickness	15mm, 20mm, 25mm
Foam Density	30~33 kg/m ³
Temperature Range	-80°C~120°C
Thermal Conductivity	0.032 W/(m*K)
Water Absorption	<0.001 g/cm ³

Universal Derivation Fitting provides with insulation and fittings

- Insulation: high temperature resistant + fire resistant.
- 30/45/90 degree fittings or customer sample tailored.



Pre-insulated copper tube:

Anti-dewing: Small gaps between the insulation and copper tube protect air conditioning running in high efficiency.
Easy installation: Well tempered and high quality copper tube make installation easy and reduce copper waste.

SINGLE TUBE

Part No.	Size(inch)	Copper Thickness	Isolation	Length	Packing
S02XX	1/4"	0.8mm	Extra or Super	≅ 50m	Coil
S03XX	3/8"	0.8mm	Extra or Super	≅ 50m	Coil
S04XX	1/2"	0.8mm	Extra or Super	≅ 50m	Coil
S05XX	5/8"	1.0mm	Extra or Super	≅ 50m	Coil
S06XX	3/4"	1.0mm	Extra or Super	≅ 50m	Coil
S07XX	7/8"	1.0mm	Extra or Super	≅ 50m	Coil

DOUBLE TUBE

Part No.	Size(inch)	Copper Thickness	Isolation	Length	Packing
P23XX	1/4"-3/8"	0.8/0.8mm	Extra or Super	20m-30m	Coil
P24XX	1/4"-1/2"	0.8/0.8mm	Extra or Super	20m-30m	Coil
P25XX	1/4"-5/8"	0.8/1.0mm	Extra or Super	20m-30m	Coil
P34XX	3/8"-1/2"	0.8/0.8mm	Extra or Super	20m-30m	Coil
P35XX	3/8"-5/8"	0.8/1.0mm	Extra or Super	20m-30m	Coil
P36XX	3/8"-3/4"	0.8/1.0mm	Extra or Super	20m-30m	Coil

FLARED TUBE

Part No.	Size(inch)	Copper Thickness	Isolation	Length	Packing
P23XXF	1/4"-3/8"	0.8/0.8mm	Extra or Super	3,5,7,10,15m	Coil
P24XXF	1/4"-1/2"	0.8/0.8mm	Extra or Super	3,5,7,10,15m	Coil
P25XXF	1/4"-5/8"	0.8/1.0mm	Extra or Super	3,5,7,10,15m	Coil
P34XXF	3/8"-1/2"	0.8/0.8mm	Extra or Super	3,5,7,10,15m	Coil
P35XXF	3/8"-5/8"	0.8/1.0mm	Extra or Super	3,5,7,10,15m	Coil
P36XXF	3/8"-3/4"	0.8/1.0mm	Extra or Super	3,5,7,10,15m	Coil

