

Glass Wool Blanket

This kind of felts are made for large laying area. In addition to the character of thermal insulation, it also has the performances of shock absorption and acoustical isolation, especially for middle or low frequency sound, which eliminate the noise and improve working environment.

This material can be freely cut in construction according to the shape required, mainly used in room, noise-reducing system, transportation, refrigerating system and household electric appliances etc.

The glass wool blankets with aluminum foil surface has good capability of heat radiation protection which is suitable for high temperature area, control room, inner wall of the working shop and so on.

Density: 10~32 kg/m³

Thickness: 25~180mm

Length: 6m~30m

Width: 1.2m

Foil clad: reinforced aluminum foil
perforated aluminum foil



For special specification, please contact us.

Glass Wool Board

Glass wool board has excellent thermal isolation performance at both high and low temperature environment. It is mainly used for the separating wall in the high grade building, ceiling, air conduit or inner wall of bellows for thermal isolating, machine shops for noise absorption or metal ceiling for moisture control. High density panels with laminated facing can be used for air-conditioning duct system.

Density: 24~96 kg/m³

Thickness: 20~150mm

Length: 600mm~2400mm

Width: 600mm~1200mm

Foil clad: reinforced aluminum foil
perforated aluminum foil



For special specification, please contact us.

Glass Wool Pipe

As this material has the characters of water-proof and anti-corrosion which is good in stopping condensation and freezing of the pipes. It is widely used in buildings, heating power pipes, air conditioning and refrigerators for thermal isolating such as hot water and steam pipes, electric power, petroleum, chemical industries.

Aluminum foil facing can be applied for preventing moisture and for radiation protection.

Density: 30~100 kg/m³

Length: 1000mm

Width: 30mm~100mm

Inner diameter: Ø22mm~Ø1220mm

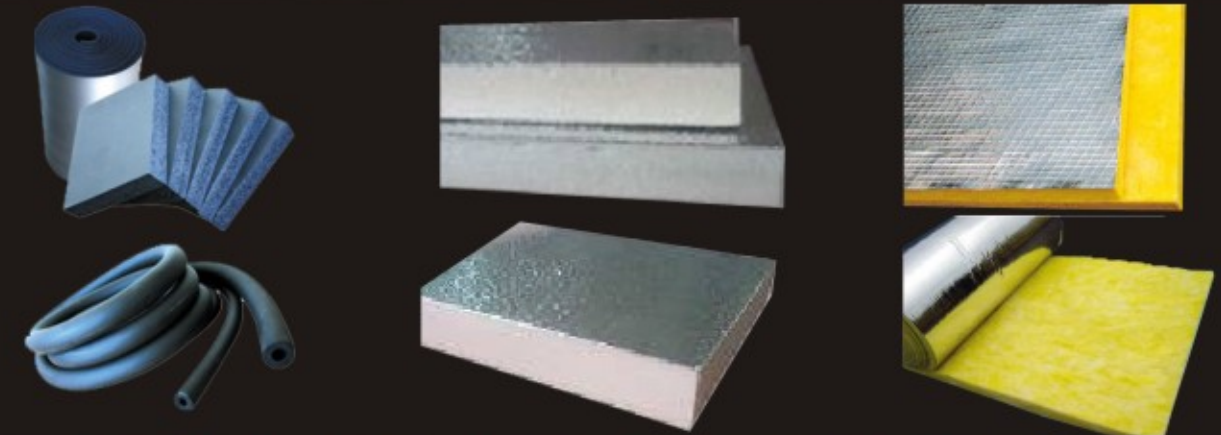


For special specification, please contact us.

INSULATION



[Your satisfaction is always our cherished desire!]



The models and specifications of equipment listed in this catalog shall be subject to change without any prior notification due to product updating.

AIRTROJAN INC.
www.airtrojan.com

Elastomeric Rubber Foam

Rubber foam insulations are engineered and manufactured for HVAC and other industrial applications. With closed cell structure they effectively retard heat flow and prevent condensation when properly installed. The environmental friendly materials are manufactured without the use of CFC's, HFC's or HCFC's. They are also formaldehyde free, low VOCs, fiber free, duct free and resistant to mildew.

Specification

| Item | Unit | Specification | | | Standard |
|--|-------------------|--|----------------------------|-------------------------|-----------------------------------|
| | | K0 | k1 | k2 | |
| Density | kg/m ³ | 48~96 | | | ASTM D1622 or D1667 |
| Temperature range | °C | -183~105 | | | - |
| Thermal conductivity | 24°C | W/(m·k) | 0.039 | 0.04 | ASTM C177 or C518 |
| | 32°C | W/(m·k) | 0.04 | 0.041 | |
| Water vapor permeability | kg/(m.s.pa) | 1.16 x 10 ⁻¹³ | | 1.5 x 10 ⁻¹³ | ASTM E96 Procedure A DIN 52615 |
| Flame spread and smoke developed index | | | Class 1 & Class 0 | Class 1 | BS 476 part 7 & part 6 |
| | | | V0 | | |
| Water absorption, by volume | % | 0.2 | | | ASTM C209 |
| Mold growth | | meet requirement | | | UL181 |
| Bacterial resistance | | meet requirement | | | ASTM G22 |
| Fungi resistance | | meet requirement | | | ASTM G21/C1338 |
| Resistance to agent chemical | | Stable performance to agent chemical | | | |
| Anti-ozone | | Not cracking | | | ASTM D1149 |
| Aging resistance | | 150 hours, single wrinkles, no cracks, holes or distortion | | | |
| Wall thickness (normal) | Tube | mm | 9,13,19,25,32,40,50 | 6,9,13,19,25,32,40,50 | 6,9,13,19 |
| | Sheet | mm | 3,6,9,13,16,19,25,32,40,50 | | |
| Tube inner diameter, tubular form | Roll | mm | | | |
| | in | | 1/4" to 6" | | 1/4" to 2" |
| Length | Tube | | 6' or 2m | | |
| | Sheet | m | 0.915 | | |
| | Roll | m | 2.5,3,4,6,7,8,10,15,30 | | |
| Width | Sheet | m | 1,1.22 | | |
| | Roll | m | | | |

For application below -50°C please contact us before ordering.

Applications:

For retard heat transmission and control condensation from chilled water and refrigeration systems. It also efficiently reduces heat transfer for hot-water plumbing, liquid-heating and dual-temperature piping.

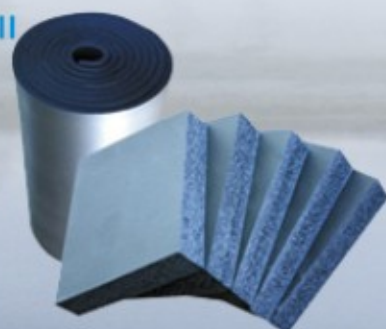
It is extremely ideal for

- Ductwork
- Dual temperature and low pressure steam lines
- Process piping
- Air-conditioner, including hot gas piping

Tube



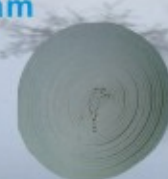
Sheet & Roll



Special glue



Rubber foam tape



Pre-insulated Ducting Panel

Polyurethane (PU)

Airtrojan zero ODP insulation panels comprise rigid polyurethane insulation foam faced on both sides with a protective low vapor permeability 80 micron aluminum foil. They are completely CFC and HCFC free and are of highly thermal resistance. This panel is especially ideal for HVAC system installation.

Phenolic (PF)

Phenolic foam pre-insulated ducting panel compounded with aluminum foil is of high strength, which takes phenolic foam as the core material with reinforced aluminum foil on both sides. It's a kind of non-combustible material which gives off no smoke and no poisonous gas when exposing to fire. Its bending strength reaches over 1MPa and the thermal conductivity index 0.02w/m.k. The phenolic foam can be fabricated into all kinds of rectangular (bended) ducts by cutting and adhesive connecting, then can be assembled into the air duct of different specifications by using the flanges and adhesive. It's widely used for the ventilation systems of central air conditioning system in hotels, apartments, hospitals, office buildings and other deluxe buildings.

Accessories



Tools



| | Comparison of properties | | | | | |
|---------------------------------|--|--|--|---|-------------------------------|--|
| | Phenolic duct | PU duct | Polyethylene(PE) | Rock wool | Ducts from Glass fiber | Rubber |
| Standard Specification | 4*1.2*0.02 m | 4*1.2*0.02 m | 2.06*1.03 m | 0.63*1.2 m | | 1.2*1.2 m |
| Common Thickness | 20-30 mm | 20-30mm | 12,15,20,25,30 mm | 30,40,50 mm | 30 mm | 9,13,19 mm |
| Fire Resistant | Non-combustible Class A | Refractory grade B1 (flame retardant) | Refractory grade B1 (flame retardant) | Grade A | Grade A | Refractory grade B1 |
| Thermal Conductivity | 0.02 W/M.K | 0.021 W/M.K | 0.032 W/M.K | 0.0328 W/M.K | 0.038 W/M.K | 0.034 W/M.K |
| Apparent Density | 50-60 kg/m ³ | 40-50 kg/m ³ | 59 kg/m ³ | 60-120 kg/m ³ | 120 kg/m ³ | 65-85 kg/m ³ |
| Whole weight | 1.2+/-0.1 kg/m ² | 1.1+/- 0.1 kg/m ² | 9.28 kg/m ² (including iron sheet) | 12 kg/m ² (including iron sheet) | 12 kg/m ² | 9.32 kg/m ² |
| Void structure | Close void rate: >95% | Close void rate: >95% | Close void rate: 85% | Opened void | Compact entity | Close void rate about 80% |
| Water absorption | <1.9% | <0.6% | 0.8-1.2% | Easy water absorption | Easy moisture absorption | 1.5-3.0% |
| Working Temperature | -260°C ~ +150°C | -60°C ~ +100°C | -55°C ~ +90°C | 7°C ~ 300°C | 0°C ~ 105°C | -40°C ~ 105°C |
| Environment Protection Property | Meets the requirement for environment protection | Meets the requirement for environment protection | Meets the requirement for environment protection | bad | has tiny fiber | better |
| Use Range | Indoor/Outdoor | Indoor/Outdoor | Indoor | Indoor | Indoor | Indoor |
| Aging resistance | good | good | common | powdered | powdered | better |
| Appearance | beautiful | beautiful | common | worse | common | better |
| Appearance color | aluminum | aluminum | grey | aluminum | white | white |
| Use condition | Independent use (integration) | Independent use (integration) | In combined with galvanized iron sheet | In combined with galvanized iron sheet | Independent use (integration) | In combined with galvanized iron sheet |
| Manufacture & montage | simple | simple | complicate | complicate | more complicate | complicate |
| Construction quality | Easy construction and control | Easy construction and control | Many links, difficult control | Many links, difficult control | Many links, difficult control | Many links, difficult control |
| Re-use rate | 90% | 90% | 0 | 0 | 0 | 0 |
| Life-span | Over 20 years | Over 20 years | 8-10 years | 6 years | 6 years | 10-15 years |
| Maintenance & repair | Basically unnecessary | Basically unnecessary | more frequent | frequent & complicate | less maintenance | less maintenance |